

Oral Health Opportunities Amid the Transforming Healthcare Environment

Oral Health Symposium

April 21, 2015

Tukwila, Washington

*Whatcom Alliance for Health Advancement (WAHA)
supporting the North Sound Accountable Communities of Health*

Two major changes in health care in Washington State

1. Insurance rate
2. Healthier Washington

Coverage

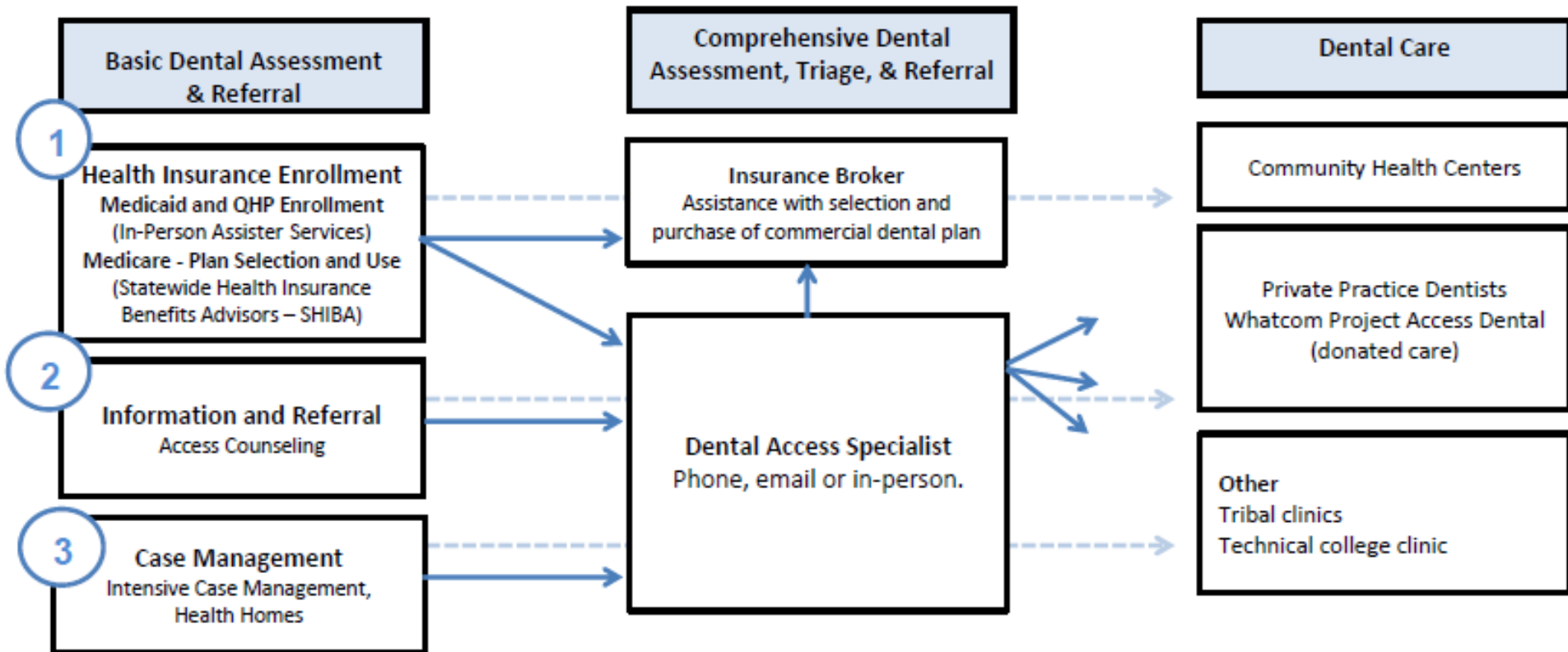
Whatcom County as of January 2015...

- 53,723 Medicaid enrollees
- More than 1 in 4
- 27,408 are adults
- Therefore the low income population shifted very quickly from being primarily **uninsured** for dental care to being **Medicaid-insured with a dental benefit.**

Coverage to care

1. Recruit dentists to accept Medicaid or donate services
2. Expand and integrate access services delivery model to screen clients for all care connection needs, including dental
3. Integrate dental educational processes into WAHA's In-Person Assister (IPA) program
4. Increase utilization of dental services by increasing referrals from primary care to dental offices
5. Facilitate planning for a long term, sustainable solution to increase access to dental services for all Whatcom County residents

WAHA dental assessment, triage, and referral process



DENTAL ACCESS TRIAGE GUIDE

For adult clients who face barriers to dental access in Whatcom County

OVERVIEW

Date	Name	DOB	Phone #
------	------	-----	---------

Client's Dental Need

Client's Recent Dental Care

When did you last go to the dentist? _____ Who did you see? _____

Do you get x-rays done? Y ___ N ___

Do you have a treatment plan? Y ___ N ___

Emergency: | infection | abscess | dental trauma | pain and/or swelling in mouth and/or face (rating on a scale of 1-10: _____) |
| treatment relates to cancer or transplant |

- **Do you have trouble breathing and/or difficulty swallowing? → EMERGENCY ROOM**
- Interfaith CHC has an Urgent Adult Dental Care Program. Arrive at 7:45 AM to be put on the stand-by list. Patients are served on a first-come, first-serve basis. There is NO guarantee that you will be seen that same day. Refer to flyer for more information.
 - Both Bellingham and Ferndale locations
 - Limited services: NO cleanings, root canals, or crowns
- SeaMar CHC of Bellingham (4455 Cordata Parkway) can provide urgent/emergent dental care. Call 360-738-3016 at 8 AM for same day limited appointment
- Bright Now and Sunrise Dental may offer urgent/emergent dental appointments

Preventive/Maintenance Care: Client isn't having any significant problems and just wants: check-up | fluoride | sealant | cleaning

- Resources: BTC, Senior Smiles for Life, or CHCs for "special populations"

Restorative Care: Client has cavities, broken teeth, and/or missing teeth and needs care to return to a maintenance level:
| fillings | endodontic treatment (root canals) | extractions | implants | crowns | bridges | partials |
| dentures | oral surgery | periodontal treatment |

Health Insurance Status

Medicare? Y ___ N ___ Medicare Advantage Plan? _____

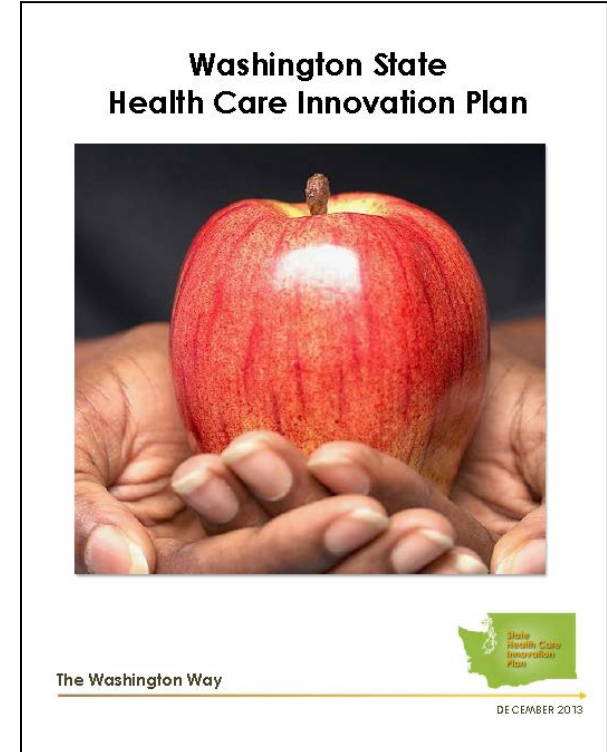
Washington Apple Health? Y ___ N ___ Other: _____

Two major changes in health care in Washington State

1. Insurance rate
2. Healthier Washington

A PLAN FOR A
HEALTHIER }
WASHINGTON }

- 1. Improve how we pay for services**
 - e.g., value-based purchasing
- 2. Ensure health care focuses on the whole person**
 - e.g., integration of physical health, mental health, and chemical dependency care
- 3. Build healthier communities through a broad collaborative regional approach**
 - e.g., **Accountable Communities of Health**



The Promise of ACHs

- **Provide a multi-sector voice** for delivery system reform, shared health improvement goals, and regional purchasing strategies
- **Serve as a forum for regional collaborative decision-making** to accelerate health system transformation, focusing on social determinants of health, clinical-community linkages, and whole person care
- **Accelerate physical and behavioral health care integration** through financing and delivery system adjustments, starting with Medicaid.

ACH boundaries



Healthier Washington is Governor Inslee's multi-sector partnership to improve health, transform health care delivery, and reduce costs. The HCA provides strategic oversight for this initiative.

The Vision of the North Sound ACH

A coalition with the **triple aim** of transforming the health system:

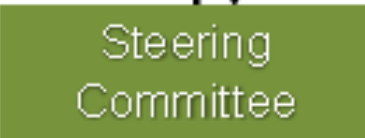
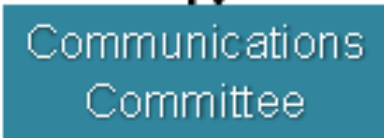
- to improve the health of our communities and our people
- to improve the experience of care and access to care
- and to lower per capita health care costs

in Snohomish, Skagit, San Juan, Island and Whatcom counties



North Sound Communities

Added first responders in 2015



Backbone Organization: Whatcom Alliance for Health Advancement

North Sound ACH governance model

North Sound ACH Pilot Grant Deliverables

- Governance
- “Backbone” (also known as administrative organization) development
- Regional Health Needs Inventory
- Initial plan for sustainability
- CASE Initiative

Thank you

For questions regarding the North Sound Accountable Community of Health please contact Lee Che Leong:

lpleong@hinet.org
(360) 788-6570

For questions regarding WAHA's dental access program please contact Lara Welker:

lrwelker@hinet.org
(360) 788-6588